

**NOTICE OF WORKSHOP**  
**Montgomery Economic Development Corporation**  
**(MEDC)**

Notice is hereby given that the Board of Directors of the Montgomery Economic Development Corporation will hold a Workshop at 9:00 a.m. on January 13, 2020 at the Montgomery City Hall, 101 Old Plantersville Road, in Montgomery, Texas.

1. Call to Order
2. Presentation and discussion regarding the submissions received on the Texas A&M student Community Design Project.
3. Discussion regarding future workshop, regular meeting agenda items and/or providing direction to staff related to continuing the planning process.
4. Adjourn



Richard Tramm, City Administrator for  
Rebecca Huss, President of MEDC

I certify that the attached notice of meeting was posted on the bulletin board at the City of Montgomery City Hall, 101 Old Plantersville Road, Montgomery, Texas, on the 9<sup>th</sup> day of January, 2020 at 2:30 o'clock p.m. I further certify that the following news media was notified of this meeting as stated above: The Courier

# City of Montgomery Community Designs

A collection of work from a Texas Target Communities Project by TAMU's Landscape Architecture Department – Fall 2019



# Workshop Goals

- Review design concepts
- Identify elements you like (*and don't like*)
- Provide direction on design concept...
- ...next step is design services RFQ



# Historic Downtown Concepts

- Preserve history & character
- Better pedestrian spaces
- Improve walkability
- Streetscape improvements



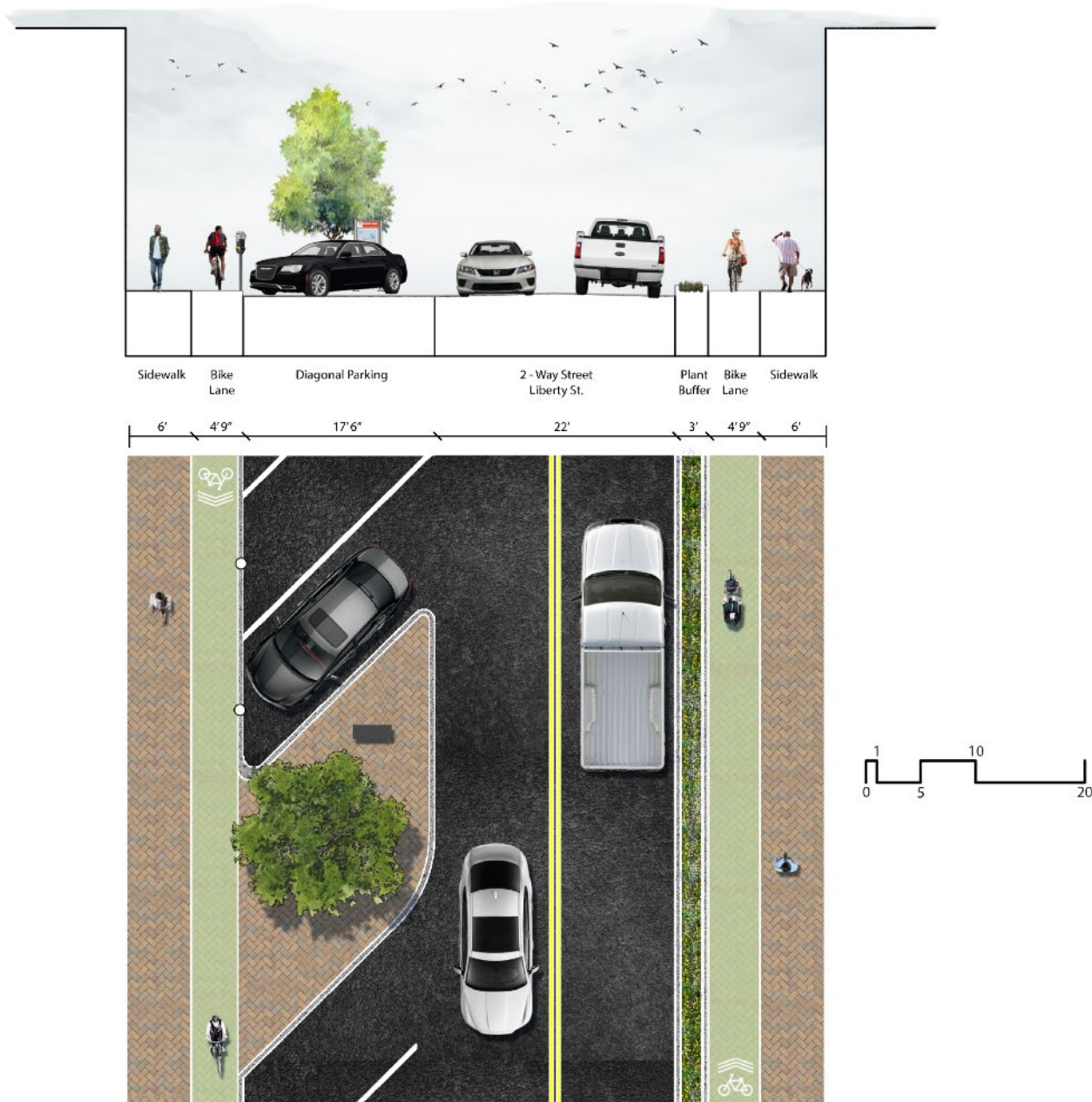
# Historic Downtown Concepts

- Parallel parking along west side of FM 149
- Separate auto and pedestrian traffic
- Create 18 new parking spaces

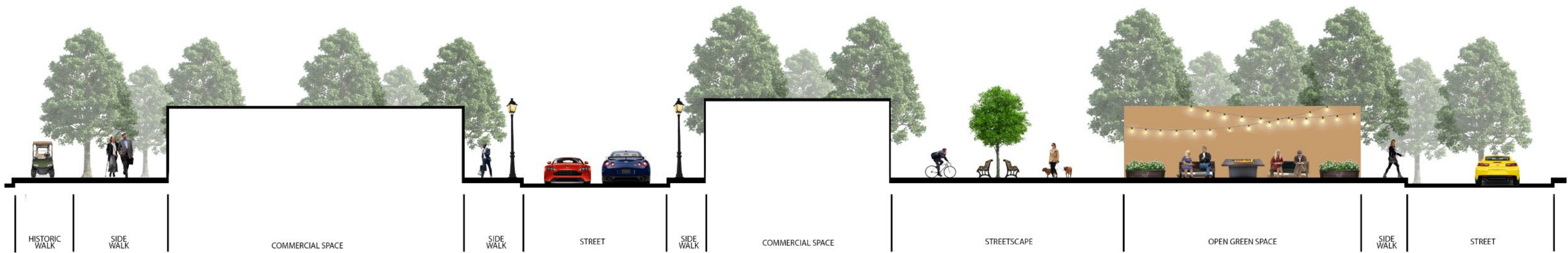


# Historic Downtown Concepts

- New design elements
- Opportunity for mid-block crossing



# Historic Downtown Concepts



- McCown Street more pedestrian friendly; still used for traffic
- Develop pedestrian space and buffer along Pond Street
- Decorative street lighting



# Historic Downtown Concepts



- Options between more hard surfaces or green space
- Options between closing McCown to cars or use as multi-purpose





# Historic Downtown Concepts



- Traffic calming median on FM 149
- Small courtyards and pedestrian gathering areas where possible to connect retail spaces



# Historic Downtown Concepts

- Implement Green Infrastructure solutions with improvements
- These also add plantings for safety, shade, and aesthetic considerations

## NATIVE PLANTS

- Native shrubs and trees can help reduce the need for irrigation and slow down stormwater runoff.

## BIORETENTION DRAINAGE

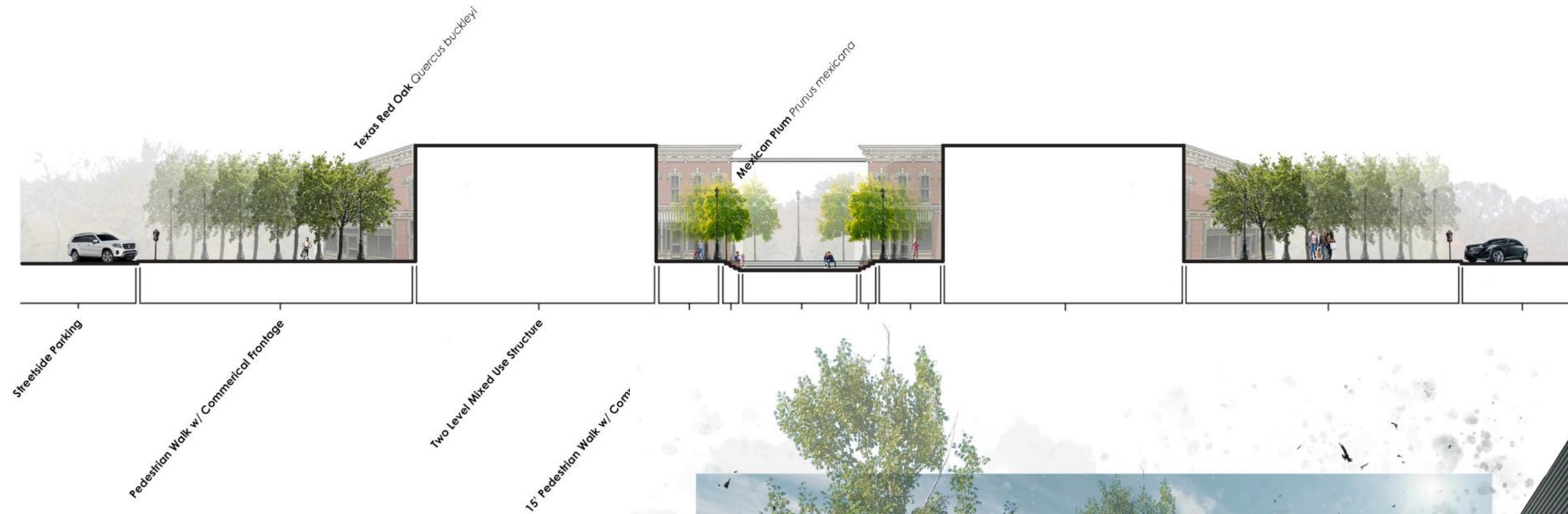
- Stormwater can be diverted into bioswale and infiltrate through soil to remove any pollutants.

## PERMEABLE PAVING

- ADA compliant pavers can infiltrate stormwater.



# Other Commercial Area Concepts



- Suitable for new development and redevelopment areas
- Focused on pedestrian experience and interaction



# Other Commercial Area Concepts



- Develop criteria & incentivize
- Mixed-use where appropriate
- Broad guidelines can be replicated



# Other Commercial Area Concepts



# Master Plan Concepts



## Civic

- 2 Downtown Square
- 3 Art District
- 10 Playground
- 13 Nursing Home & Daycare
- 15 Fire Station
- 17 Community Center
- 20 Church
- 24 Amphitheater Park

## Greenspace

- 5 Bioswale Parking
- 7 Nature Trail Walk
- 11 Nursery
- 12 Community Garden/Park
- 14 Rain Garden
- 16 Detention Pond
- 25 Nature Trails

## Residential

- 1 Single-Family Neighborhood
- 18 Bungalow Court
- 21 Apartments
- 23 Townhome Community

## Commercial

- 4 Existing Commercial
- 6 Texas Plaza
- 8 Mixed Commercial
- 9 Flagship Plaza
- 19 Mixed Use Hotel
- 22 Montgomery Outlets
- 28 Gas Station & Storage

# Master Plan Concepts

- Connect existing neighborhoods, parks, and facilities with trail system
- Plan to connect new development
- Phase based on objective criteria



# Master Plan Concepts

- Identify natural features that should be preserved
- Incentivize developers and landowners to promote desirable projects



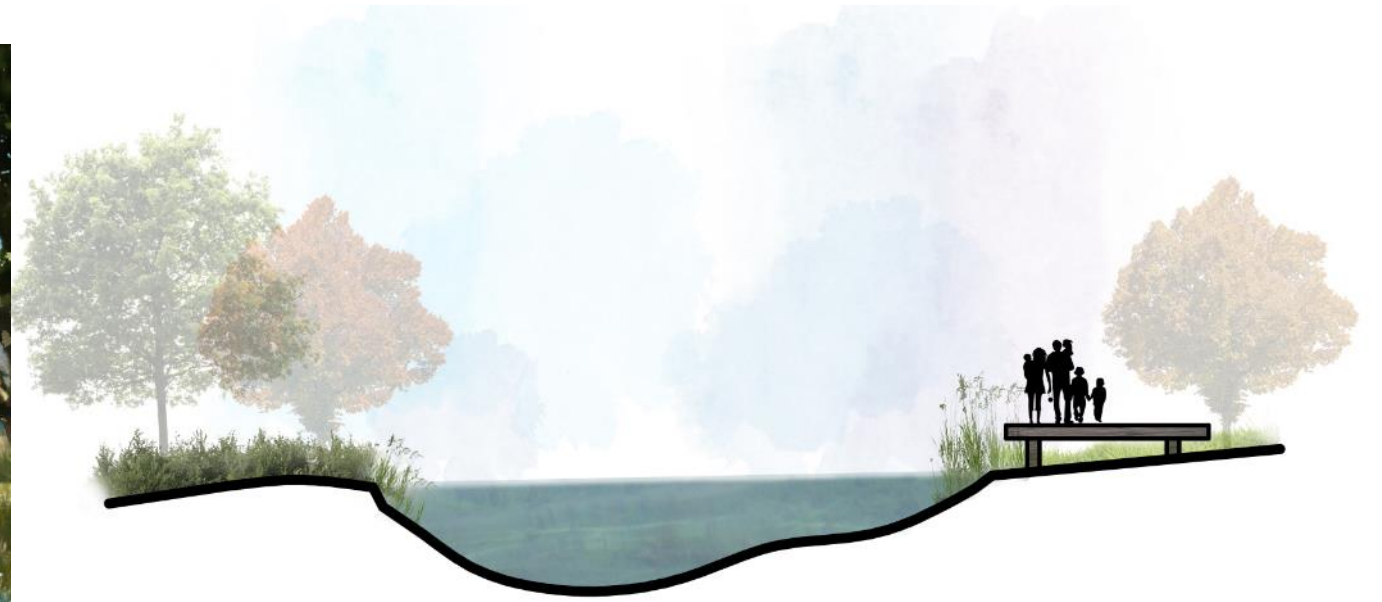


# Parks & Trails Concepts



- Large scale ecological park that provides open space and buffers streams and riparian areas
- Boardwalk elements and recreational opportunities

# Parks & Trails Concepts



- Conceptual boardwalk design
- Lake for paddle sports



# Parks & Trails Concepts



- Boardwalk concept with more amenities

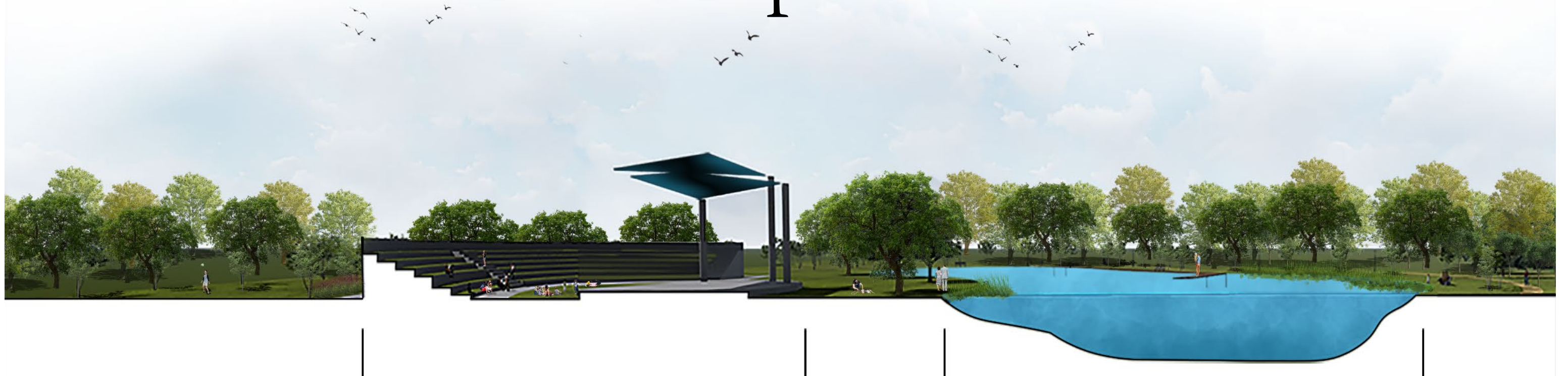


# Parks & Trails Concepts

- Developed gathering areas where natural spaces meet commercial or mixed-use zones



# Parks & Trails Concepts



- Outdoor entertainment areas built around amenities



# Parks & Trails Concepts

- Pocket parks in future developments
- Fountains or splashpads as focal features



# Parks & Trails Concepts



- Trails through wooded areas
- Multi-use parks and playgrounds

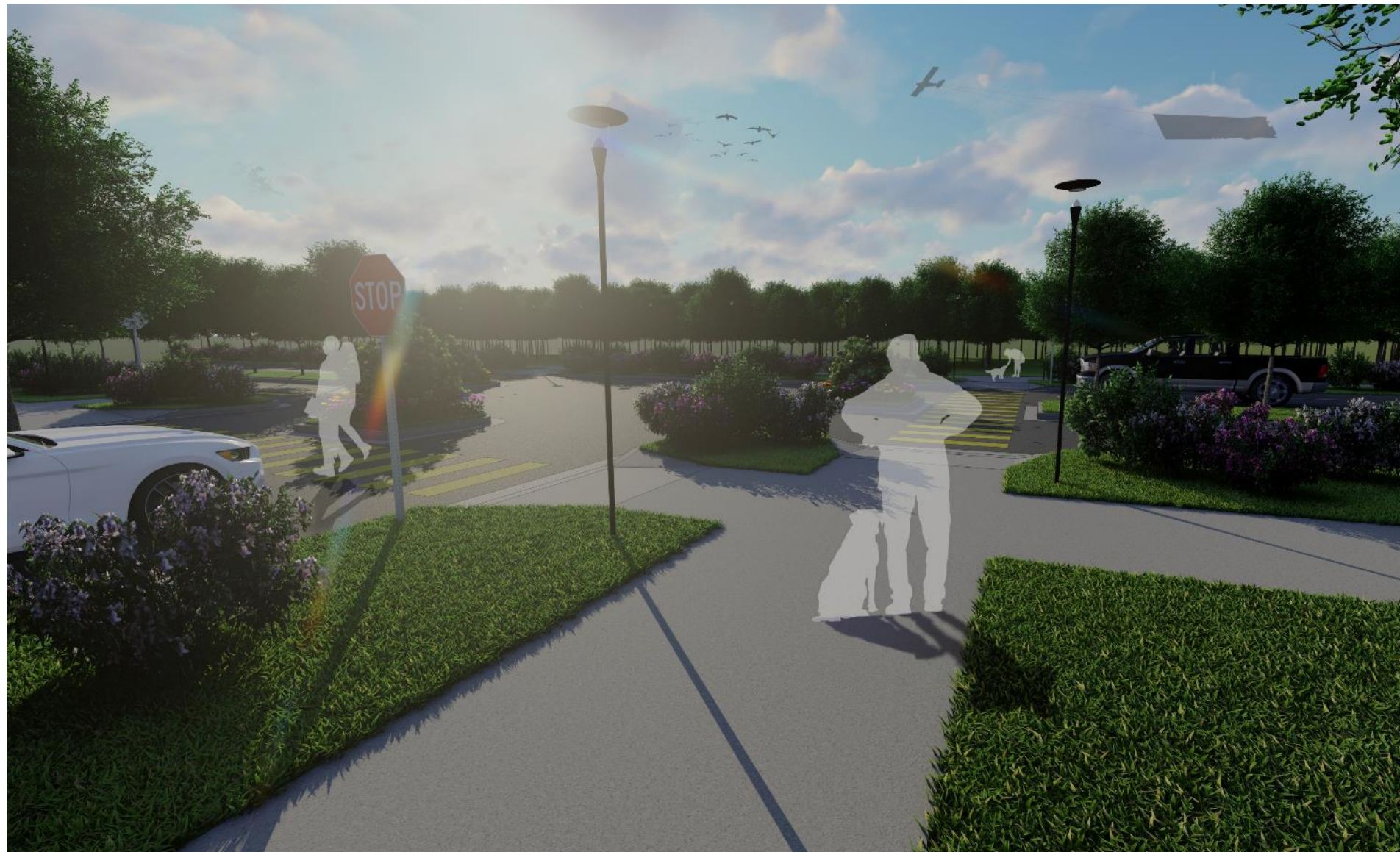
# Parks & Trails Concepts

- Multi-modal trails connect different areas of the city





# Streets & Sidewalks Concepts



- Pedestrian-friendly streets with sidewalks and crossings
- Street trees and plantings where appropriate

# Streets & Sidewalks Concepts



- Integrate pedestrian spaces and alternative design solutions along roadways (note the buffer between cars & people)
- Sidewalks and lighting in residential areas



# Streets & Sidewalks Concepts



- Pedestrian scale elements at major roadways